

重負荷  
Heavy duty

回轉式系列  
Live centers series

## > NCH-62 SERIES

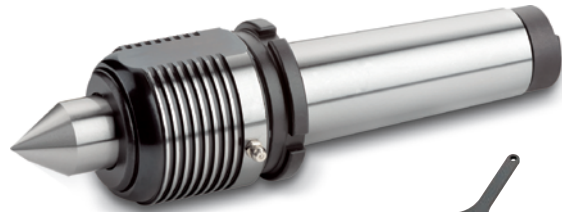
### 精密型高速回轉頂針

#### HEAVY DUTY PRECISE HIGH SPEED LIVE CENTER

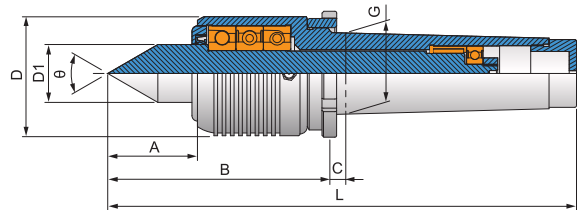
- ◎ 適用: CNC車床及高速車床。  
Application CNC lathe, high speed lathe
- ◎ 用途: 適用高速高精度軸心車削加工。  
Working Usage Applicable for high speed and high precision workpiece turning process
- ◎ 結構: 斜角滾珠精密級高速軸承, 針狀軸承特殊設計製成。  
Structure Combination of angular contact ball precise high speed bearing and needle bearing
- ◎ 配件: Y型扳手 (Y spanner)  
Accessories Y type spanner
- ◎ 精準度: 0.002以內  
TIR Less than 0.002mm

規格 / Specification 單位/UNIT: mm

型式/外表尺寸 Model/Spec	A	B	C	D	D1	G	L	$\theta$	軸承最高轉數 Max. RPM	軸承徑向力 (載重) Max. radial load	軸承軸向力 (推力) Max. axial thrust force
NCH-62-3A	47	116	8	68	31.2	23.825(MT3)	203	60°	12,000 rpm	1,600 kg	1,240 kg
NCH-62-4A	49	121	9	68	31.2	31.267(MT4)	229	60°	12,000 rpm	2,730 kg	1,750 kg
NCH-62-5A	49	121	9	68	31.2	44.399(MT5)	256	60°	12,000 rpm	2,730 kg	1,750 kg



Y型扳手  
Y type spanner



## > SC-60 SERIES

### 高速強力回轉頂針

#### HEAVY DUTY HIGH SPEED STRONG LIVE CENTER

- ◎ 適用: CNC重型車床及重型高速車床。  
Application CNC heavy duty lathe, heavy duty high speed lathe
- ◎ 用途: 適用長軸心重力車削加工。  
Working Usage Applicable for the long workpiece heavy duty turning process
- ◎ 結構: 採用斜角精密高速軸承, 滾針軸承, 三個支撐點特殊排列製成。  
Structure Combination of angular contact precise high speed ball bearing and needle bearing, with the design of three supporting points
- ◎ 選配: SC-60-H-6A: 專用Y型扳手  
Accessories For SC-60-H-6A: special Y type spanner
- ◎ 精準度: 0.002以內  
TIR Less than 0.002mm

規格 / Specification 單位/UNIT: mm

型式/外表尺寸 Model/Spec	A	B	C	D	D1	G	L	$\theta$	軸承最高轉數 Max. RPM	軸承徑向力 (載重) Max. radial load	軸承軸向力 (推力) Max. axial thrust force
SC-60-H-4	54	97	9	78	34.8	31.267(MT4)	205	60°	5,000 rpm	1,900 kg	1,600 kg
SC-60-H-5	62	109	9	83	44.8	44.399(MT5)	244	60°	5,000 rpm	3,000 kg	2,200 kg
SC-60-H-6A	70	152	10	108	59.9	63.348(MT6)	342	60°	3,000 rpm	5,000 kg	3,500 kg



Y型扳手  
Y type spanner

