

> TSC-9662 鎢鋼 SERIES

附螺帽鎢鋼固定式頂針

TUNGSTEN CARBIDE STEEL POINT WITH NUT DEAD CENTER

- ◎ 適用: CNC車床及其他機床。
Application CNC lathe and other lathe
- ◎ 用途: 適用尾座回轉型結構設計使用。
Working Usage Applicable for rotary structure of tailstock
- ◎ 結構: 採用合金鋼材, 經熱處理硬度達57°~60°, 精密研磨製成。
Structure Made of alloy steel and hardened to HRC 57-60, precision ground, adopted the tungsten carbide steel from the USA, which is high wear resistance
- ◎ 特點: 採用美國進口鎢鋼原料製成, 不易磨損。
Advantage Adopted the tungsten material imported from the US, which is wear resisting
- ◎ 配件: Y型扳手
Accessories Y type spanner
- ◎ 精準度: 0.002以內
TIR Less than 0.002mm

規格 / Specification 單位/UNIT: mm

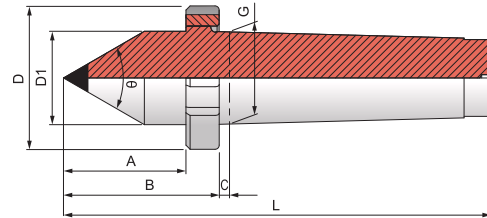
型式/外表尺寸 Model/Spec	A	B	C	D	D1	G	L	θ
TSC-9662-TS-3A	36	51	8	53	24.1	23.825(MT3)	138	60°
TSC-9662-TS-4A	42	62	9	68	31.6	31.267(MT4)	170	60°
TSC-9662-TS-5A	59	71	9	88	45	44.399(MT5)	206	60°

固定式
Dead centers type

鎢鋼系列
Tungsten carbide series



Y型扳手
Y type spanner



> TSC-9663 鎢鋼 SERIES

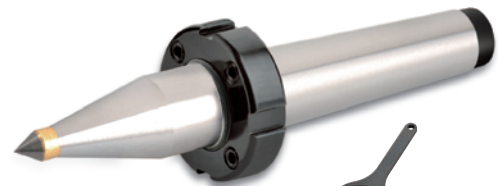
附螺帽鎢鋼兩段式固定頂針

TUNGSTEN CARBIDE STEEL POINT TWO PHASE TYPE WITH NUT DEAD CENTER

- ◎ 適用: CNC車床及其他機床。
Application CNC lathe and other lathe
- ◎ 用途: 適用尾座回轉型結構設計使用(細長型車削加工)。
Working Usage Applicable for rotary structure of tailstock, and slender workpiece turning process
- ◎ 結構: 採用合金鋼材, 經熱處理硬度達57°~60°, 精密研磨製成。
Structure Made of alloy steel and hardened to HRC 57-60, precision ground, adopted the tungsten carbide steel from the USA, which is high wear resistance. the welding depth is 20mm, strong rigidity and better stability.
- ◎ 特點: 採用美國進口鎢鋼原料製成, 不易磨損, 鎢鋼焊接
Advantage 20mm深、剛性强、穩定性佳。
Adopted the tungsten material imported from the US, which is wear resisting, the welding depth of tungsten reach 20mm, strong rigidity, good stability.
- ◎ 配件: Y型扳手
Accessories Y type spanner
- ◎ 精準度: 0.002以內
TIR Less than 0.002mm

規格 / Specification 單位/UNIT: mm

型式/外表尺寸 Model/Spec	A	B	C	D	D1	d	G	L	θ
TSC-9663-TS06-3A	60	75	8	53	24.1	6	23.825(MT3)	162	60°
TSC-9663-TS08-3A	60	75	8	53	24.1	8	23.825(MT3)	162	60°
TSC-9663-TS10-3A	60	75	8	53	24.1	10	23.825(MT3)	162	60°
TSC-9663-TS16-3A	60	75	8	53	24.1	16	23.825(MT3)	162	60°
TSC-9663-TS06-4A	65	85	9	68	31.6	6	31.267(MT4)	193	60°
TSC-9663-TS08-4A	65	85	9	68	31.6	8	31.267(MT4)	193	60°
TSC-9663-TS10-4A	65	85	9	68	31.6	10	31.267(MT4)	193	60°
TSC-9663-TS16-4A	65	85	9	68	31.6	16	31.267(MT4)	193	60°



Y型扳手
Y type spanner

