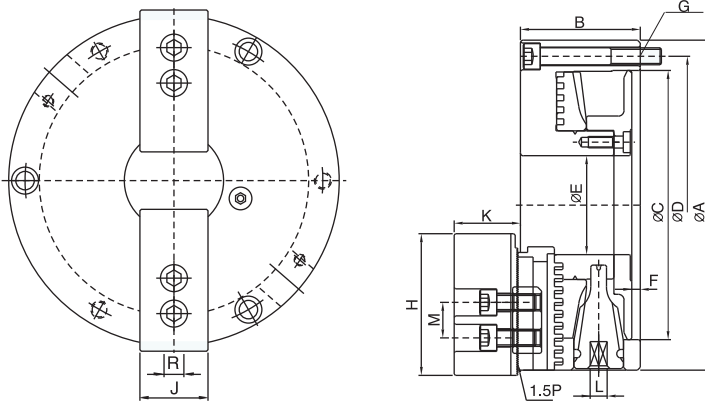


齒式二爪鋼殼夾頭

TNT 2-JAW STEEL BODY CHUCKS



尺寸圖 / DIMENSIONS

齒式鋼殼夾盤特色：

- ◎ 1.可替代修整油壓生爪成型盤。
- ◎ 2.爪仔可前後任意調整，加大夾持工件範圍。
- ◎ 3.生爪及硬爪與CNC車床油壓爪共用。
- ◎ 4.鋼殼結構於高速迴轉時安全性高，耐磨性強，使用壽命長。
- ◎ 5.轉動板手扭力較小操作順暢。

Steel body chucks:

- ◎ 1.Can be used as a " Forming plate " for machining soft jaws.
- ◎ 2.Hard jaws and soft jaws can be adjusted just like on a power Chuck to increase the gripping range.
- ◎ 3.Hard jaws as well as Soft jaws are interchangeable with those of power chucks.
- ◎ 4.Chuck Body is made of steel to enhance safety operations for high speed machining.
- ◎ 5.The Chuck Handle can be operated easily and smoothly.

特點配合圖示說明 / ILLUSTRATE :



可替代修整油壓生爪成型盤

The chuck can be used as a " Forming plate " for machining soft jaws.



爪仔可前後任意調整加大夾持工件範圍

Top jaws can be adjusted back and forth easily, thus increasing gripping range.

規格 / Specification

單位/UNIT:mm

型式 / 規格 MODEL/SPEC.	A	B	C	D	E	F	G	H	J	K	L
TNT-07	193	78	155	172	58	5	3-M10x1.5P	73	31	38	11
TNT-09	233	85	190	210	70	5.5	3-M12x1.75P	95	35	40	12

型式 / 規格 MODEL/SPEC.	M	R	最高轉速 Max. Speed r.p.m.(min ⁻¹)	把握範圍 Max.Gripping Diameter		淨重 Weight (kg)
				外徑把握 O.D.Clamping	內徑把握 I.D.Clamping	
TNT-07	20	12	3200	ø8~ø235	ø66~ø235	14.4
TNT-09	25	14	2800	ø11~ø280	ø85~ø280	22.3