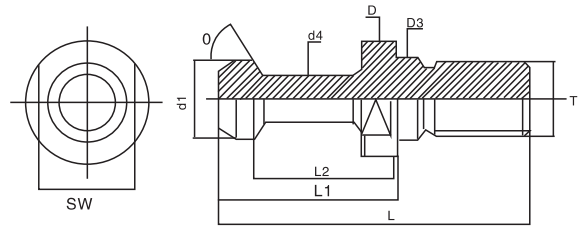


### > BT SERIES

#### 螺栓拉頭

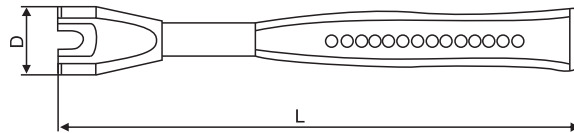
SPEC. MODEL	D	d1	d2	d3	L	l1	T	重量 (KGS)
BT30-45°	16.5	11	7	12.5	43	23	M12	0.04
BT40-45°	23	15	10	17	60	35	M16	0.10
BT50-45°	38	23	17	25	85	45	M24	0.30
BT30-60°	16.5	11	7	12.5	43	23	M12	0.04
BT40-60°	23	15	10	17	60	35	M16	0.10
BT50-60°	38	23	17	25	85	45	M24	0.30
BT30-90°	16.5	11	7	12.5	43	23	M12	0.04
BT40-90°	23	15	10	17	60	35	M16	0.10
BT50-90°	38	23	17	25	85	45	M24	0.30



#### BT30/40/50拉釘扳手

SPANNER FOR STUD

型號 Model	D	L	適用拉釘 Where used
ZYWB-30	27	210	BT30
ZYWB-40	37	230	BT40
ZYWB-50	49	280	BT50

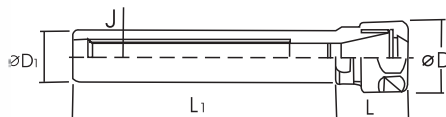


### > ER SERIES

#### 直柄立銑刀刀杆

特點:

- ◎ 照明點及切削液的供給可以到達加工部位
- ◎ 採用SCM-21 鋼材制成,可用于精密加工



型號 MODEL	Unit:mm		
	L 1	L	D
C20-ER16-50	50	30	28
C20-ER16-100	100	30	28
C20-ER16-150	150	30	28
C20-ER20-50	50	36	34
C20-ER20-100	100	36	34
C20-ER25-50	50	46	42
C20-ER25-100	100	46	42
C20-ER25-150	150	46	42
C25-ER16-100	100	30	28
C25-ER16-150	150	30	28
C25-ER20-150	150	36	34
C25-ER25-100	100	46	42
C25-ER25-150	150	46	42
C25-ER32-80	80	54	50
C25-ER40-100	100	55	63
C32-ER25-60	60	46	42
C32-ER32-100	100	54	50
C40-ER40-100	100	55	63
C40-ER32-100	100	54	50
C40-ER40-100	100	55	63

