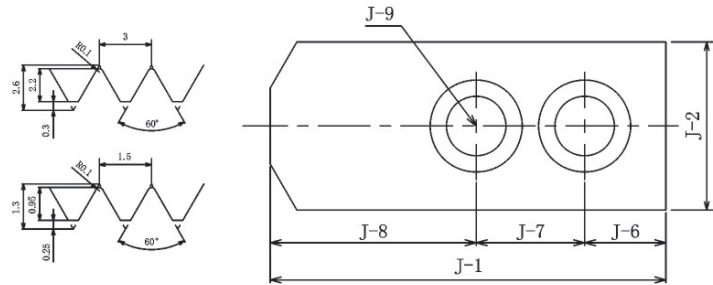
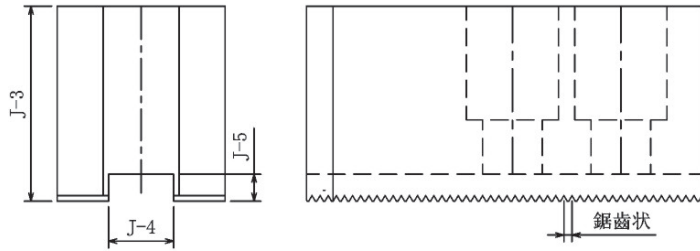
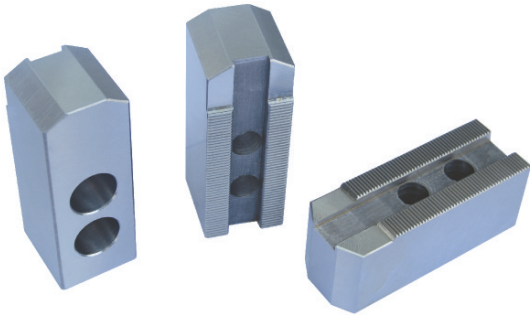


油壓軟爪

SOFT JAWS FOR HYDRAULIC CHUCKS



規格 / Specification

規格/尺寸 SPEC/SIZE	長 Length J-1	寬 Width J-2	高 Height J-3	鍵槽寬 Slot width J-4	鍵槽深 Slot depth J-5	J-6	中心孔距 Hole center distance J-7	J-8	螺絲 Screw J-9	J-10	齒距 Serration pitch	淨重 N.W.(KG)
SC-04	53	23	23	10	4	9	14	29	M8	3	1.5×60°	0.42
SC-05	62	25	30	10	4	10	14	38	M8	3	1.5×60°	0.85
SC-06	73	31	36	12	5	15	20	38	M10	14	1.5×60°	1.5
SC-08	95	35	38	14	5	24	25	46	M12	16	1.5×60°	2.4
SC-10	110	40	42	16	5	30	30	50	M12	18	1.5×60°	3.6
SC-12-21	129	50	50	21	6	39	30	60	M16	23	1.5×60°	6.1
SC-12-18	129	50	50	18	6	39	30	60	M14	23	1.5×60°	6.2
SC-15(18)-22	165	62	62	22	8	37	43	85	M20	25	1.5×60° 3.0×60°	12.5
SC-15(18)-25.5	165	62	62	25.5	6	37	43	85	M20	25	1.5×60° 3.0×60°	12.5
SC-15(18)-26	156	64	70	26	9	34	50	72	M20	25	3.0×60°	13.4
SC-21(24)	180	65	70	25	9	40	60	80	M20		3.0×60°	16.2
SC-32	210	74	90	25	9	40	80	90	M20		3.0×60°	29.2
SC-40	270	85	110	30	4		76.2		M24			
SC-50	270	85	110	30	4		76.2		M24			
SC-63	270	110	110	30	4		76.2		M24			
SC-79	270	110	110	30	4		76.2		M24			

注: 12寸(含)以內卡爪標準齒距1.5×60°, 如需3.0×60° 請備注說明。非標可定做。

Remark: the serration pitch 1.5×60° should be standard if the jaws is not bigger than 12", please specify in case specially required. Customized spec can be made.

