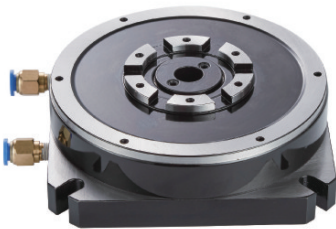


## JDS超精密膜片固定型夾頭

### JDS ULTRA-PRECISION DIAPHRAGM FIXED CHUCK



#### 產品特性

- ◎ 為固定式不可回轉，內置氣缸直接驅動。採用膜片彈性技術，重複精度 $3\mu$ 以下。
- ◎ 永久性精密壽命高密封性設計，防水防塵能力。
- ◎ 輕鬆控制兩端同心度、平行度。多段尺寸可分次加工、降低設備成本。
- ◎ 以單動研磨機、取代CNC多段同時加工。通過三點組合夾持力能精密微調。

#### 產品適用性

- ◎ 適用CNC 銑鑽床非標夾具等運用，可做聯排多工位夾具使用。
- ◎ 適用於微電子產品、光學零件、醫療零件、輕薄高精度度工件的機加工。
- ◎ 精密元件的檢測。

#### PRODUCT FEATURES

Fixed, non-rotating, directly driven by the built-in cylinder Employing diaphragm elasticity technology, with a repeatability of below  $3\mu$

Permanent service life in precision; designed with high sealing performance and waterproof and dustproof capabilities

Allowing easy control over the concentricity and parallelism at both ends Allowing separate size processing over multiple sections to reduce equipment costs

Replacing CNC multi-section simultaneous processing with single-action grinding machine

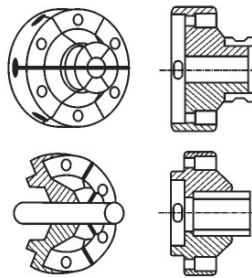
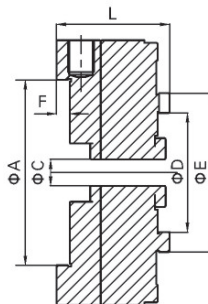
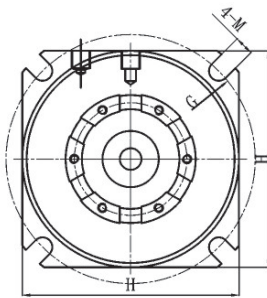
Allowing fine-tuning with three-point clamping force

#### APPLICATIONS

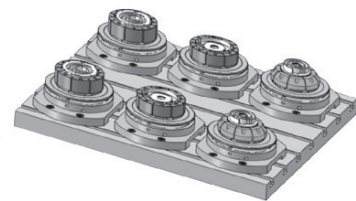
Suitable for non-standard fixtures for CNC milling and drilling machines; may be used as row-type multi-station fixtures

Suitable for machining of microelectronics products, optical parts, medical parts, thin and high-precision workpieces

Detection of precision components



运用范例



產品參數  
PARAMETERS

產品型號 Model	A	B	D	E	F	G	H	L	M	驅動方式 Drive Mode	使用壓力 Working Pressure Kg/cm <sup>2</sup>	夾持行程 Opening/Closing Stroke mm	使用夾爪 型號 Gripping Jaw Model
JDS4-60	70	10	45	60	5	120	100	42.7	7	空壓	2-7	0.1	JD-60
JDS5-70	100	15	50	70	5	170	150	49.2	9	空壓	2-7	0.3	JD-70
JDS6-100	150	35	80	100	5	195	177	54.3	11	空壓	2-7	0.3	JD-100
JDS8-150	180	65	120	150	5	245	220	59.8	13	空壓	2-7	0.3	JD-150

