

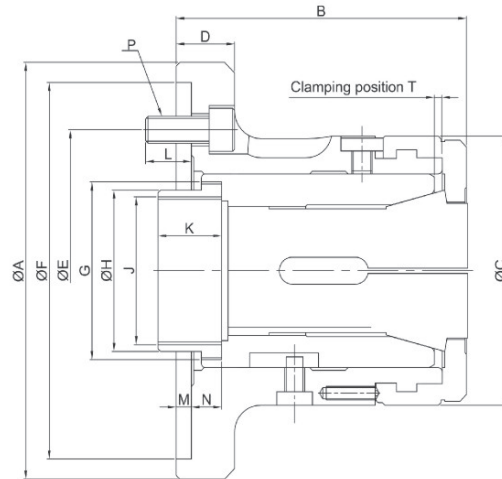
> LL SERIES

筒夾夾頭一

COLLET CHUCK 1



- ◎ 1.筒夾夾頭可快速拆卸止檔蓋，適用於NC/CNC車床加工棒材。
 - ◎ 2.棒材能經由夾頭通孔進行送料作業。
 - ◎ 3.可依工作形狀及尺寸來選擇適合筒夾。
- ◎ 1. It is mainly suitable for NC/CNC lathe for machining bar and the cover is disassemble and the collet can be changed quickly.
 - ◎ 2. The bar can be fed in by bar feeder and through the collet chuck hole which can improve the processing efficiency.
 - ◎ 3. Customers can choose a suitable spring collet according to the bar shape(round, square, hexagonal) and size.



寸法 Size 型號 Model	適合連接板 Suitable for connecting plates	容許棒材直徑 Allowable bar diameter (mm)	套筒行程 Sleeve stroke (mm)	最大容許推力 Maximum allowable thrust KN(Kgf)	最大夾持力 Max clamping force KN(kgf)	最高轉速 Max r.p.m	重量(Kg) Weight	使用筒夾 Using collets
LL-26	110	26	4.5	17.6(1800)	37.9(3870)	8000	4.3	161E
LL-30	110	30	4.5	19.6(2000)	42.1(4300)	8000	4.2	163E
LL-42	140	42	7	25(2549)	55(5608)	6000	6.2	173E
LL-52	170	52	7	30(3059)	65(6628)	5000	12.5	177E
LL-60	170	60	7	30(3059)	65(6628)	5000	11.5	185E
LL-60	220	60	7	30(3059)	65(6628)	5000	15.5	185E
LL-80	220	80	7	35(3568)	73(7443)	4000	19.5	193E

寸法 Size 型號 Model	A	B	C	D	E	F (H6)	G	H	J max.	K	L	M	N	P	T
LL-26	120	100	85	23	82.6	110	M50×P1.5	45	M40×1.5	15	16	4	10.2	3-M10	2.3
LL-30	120	100	85	23	82.6	110	M50×P1.5	45	M40×1.5	15	16	4	10.2	3-M10	2.3
LL-42	155	114	100	23	104.78	140	M66×P1.5	60	M55×P2.0	25	18	6	11.9	3-M10	3.1
LL-52	185	138	130	30	133.35	170	M90×P1.5	66.7	M60×P2.0	30	18	6	17.9	6-M12	3.1
LL-60	185	139	130	30	133.35	170	M90×P1.5	80	M74×P2.0	30	18	6	17.9	6-M12	3.1
LL-60	235	141	130	32	171.45	220	M90×P1.5	80	M74×P2.0	30	20	6	19.9	6-M16	3.1
LL-80	235	167	156	32	171.45	220	M114×P2.0	99	M90×P2.0	27.5	20	6	23.4	6-M16	6.1

* 保留技術更改的權利，恕不另行通知 Subject to technology changes without prior information
 * 非標需求可訂做 Non-standard requirements can be made

