

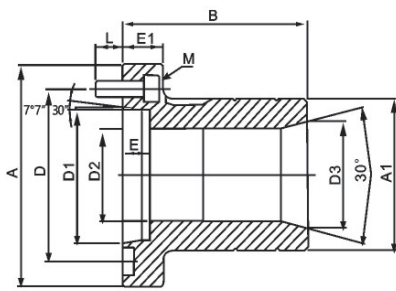
LLT SERIES

LLT 後拉式筒夾夾頭

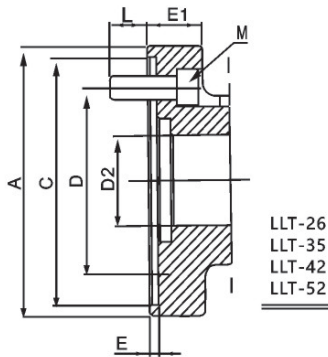
LLT PULL BACK COLLET CHUCK



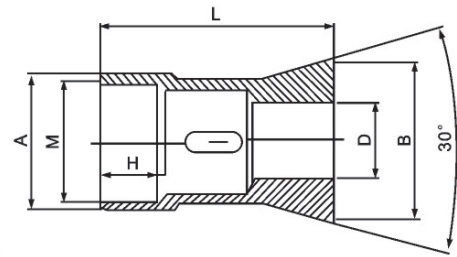
- ◎ 后拉式筒夹夹头，适用于各种旋削机械及数控车床。
- ◎ 安装方便，与中空夹头相同，可相容互换。
- ◎ 可使棒料从夹头的通孔进行送料作业。
- ◎ 不同尺寸及形状的工件，可选用合适的弹簧夹头。
- ◎ Pull back collet chuck
- ◎ It's applicable for various CNC machines.
- ◎ Easy installation, the installation size is compatible with the related hydraulic chucks.
- ◎ The bar workpiece can be input through the collet chuck hole.
- ◎ The collet is optional for different size and shape workpiece.



LLT-26A4 LLT-26A5 LLT-35A4 LLT-35A5
LLT-42A5 LLT-45A6 LLT-52A5 LLT-52A6



LLT-26
LLT-35
LLT-42
LLT-52



LLB

型號 Model	A	A1	B	C(H6)	D	D1	D2	D3	E	E1	L	M
LLT-26	120	120	110	110	82.6		40	48	4	25	17	3-M10*25
LLT-35	120	83	110	110	82.6		49	58	4	25	17	3-M10*25
LLT-42	155	90	115	140	104.8		56	65	5	25	17	4-M10*25
LLT-52	155	106	125	140	104.8		65	73	5	25	17	4-M10*25
LLT-26A4	112	73	110		82.6	63.51	40	48	17	25	17	3-M10*30
LLT-26A5	135	73	110		82.6	82.56	40	48	17	25	17	3-M10*30
LLT-35A4	112	83	110		82.6	63.51	49	58	17	25	17	3-M10*30
LLT-35A5	135	83	110		82.6	82.56	49	58	17	25	17	3-M10*30
LLT-42A5	135	90	115		104.8	82.56	56	65	17	25	17	4-M10*30
LLT-42A6	165	90	115		133.4	106.38	56	65	17	30	17	4-M12*30
LLT-52A5	135	106	125		104.8	82.56	65	73	17	25	17	4-M10*30
LLT-52A6	165	106	125		133.4	106.38	65	73	17	30	17	4-M12*30

型號 Model	A (g6)	B	D max 圓棒 Round	D max 六角料 Hexagonal	D max 方料 Square	H	L	M
LLB-26	40	49	26	22	18	27	95	M33*1.5
LLB-35	49	59	35	32	26	27	95	M42*1.5
LLB-42	56	66	42	42	29	27	100	M50*2
LLB-52	65	74	52	52	36	27	100	M55*2

* 保留技術更改的權利，恕不另行通知 Subject to technology changes without prior information
* 非標需求可訂做 Non-standard requirements can be made

