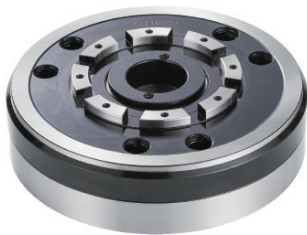


JPD被動型超精密膜片夾頭(後驅動型)

JPD PASSIVE ULTRA-PRECISION DIAPHRAGM CHUCK (REAR DRIVE TYPE)

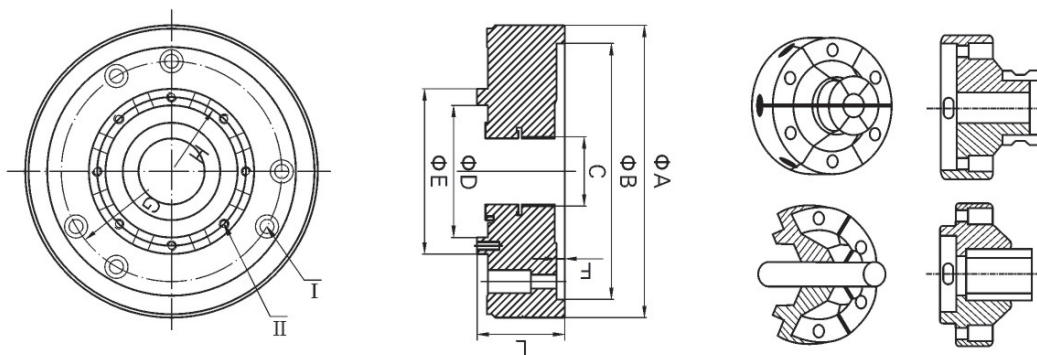


產品特性

- ◎ 采用膜片彈性技術，重複精度 3μ 以下，永久性精密壽命。高密封性設計，防水防塵能力。
- ◎ 輕鬆控制兩端同心度、平行度，多段尺寸可分次加工、降低設備成本。
- ◎ 以單動研磨機、取代CNC多段同時加工，需配後置氣油缸拉桿驅動。

產品適用性

- ◎ 微型軸承、馬達、精密套的精密加工，精密元件的檢測。
- ◎ 適用於微電子產品、光學零件、醫療零件、輕薄高精度度工件的車、磨加工。
- ◎ Employing diaphragm elasticity technology, with a repeatability of below 3μ , Permanent service life in precision. Designed with high sealing performance and waterproof and dustproof capabilities.
- ◎ Allowing easy control over the concentricity and parallelism at both ends. Allowing separate size processing over multiple sections to reduce equipment costs.
- ◎ Replacing CNC multi-section simultaneous processing with single-action grinding machine. Requiring the provision of rear pneumatic/hydraulic cylinder rod drive.
- ◎ Precision machining of micro bearings, motors and precision sleeves
- ◎ Suitable for turning and grinding of microelectronics products, optical parts, medical parts, thin and high-precision workpieces Detection of precision components



產品參數 PARAMETERS

產品型號 Model	A	B	C	D	E	F	G	L	I	II	H	使用壓力 Working Pressure Kg/cm ²	夾持行程 Opening/Closing Stroke mm	使用夾爪 型號 Gripping Jaw Model
JPD4-60	116	72	M12*1.5	45	60	6	100	41	6-M5沉頭	6-M4牙孔	52	2-7	0.1	JD-60
JPD5-70	147	125	M28*1.5	50	70	5	106.4	57.2	6-M6沉頭	6-M5牙孔	60	2-7	0.3	JD-70
JPD6-100	177	155	M55*2	80	100	5	133.4	53	6-M8沉頭	8-M5牙孔	90	2-7	0.3	JD-100
JPD8-150	220	190	M82*1.5	120	150	5	170	56.8	8-M8沉頭	8-M6牙孔	135	2-7	0.3	JD-150

* 保留技術更改的權利，恕不另行通知 Subject to technology changes without prior information
 * 非標需求可訂做 Non-standard requirements can be made