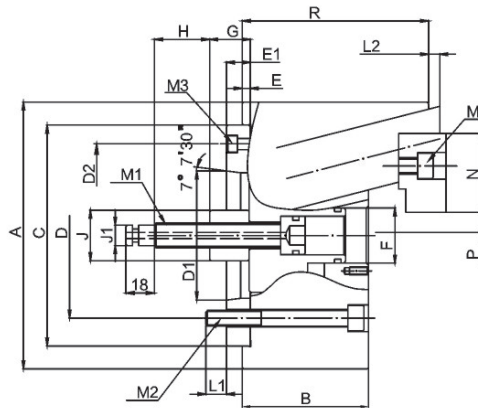
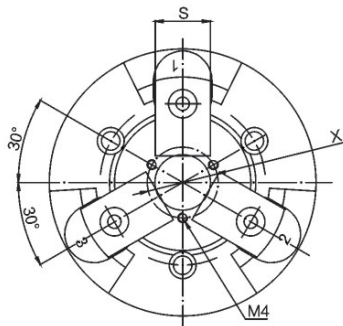
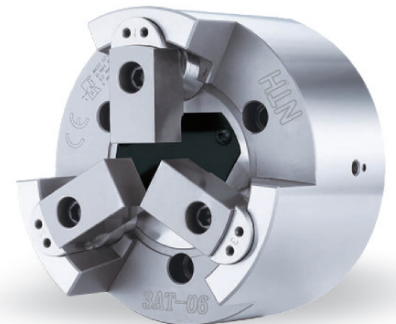


> 3AT SERIES

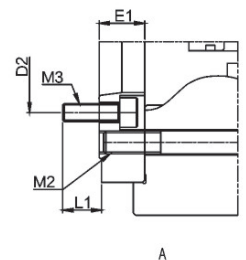
三爪強力後拉固鎖式動力夾頭

3 JAW PULL LOCK POWER CHUCK

- ◎ 可同時將工件作徑向夾持與軸向後拉，使工件緊貼定位基準面不上浮。
- ◎ 可配合氣密檢測，進行軸向位置確認，適合對長度的進行高精度加工。
- ◎ 此夾頭為圓柱滑動結構及高剛性硬化處理的本體，並經過軸孔精搪，確保高夾持精度與耐用度，適合使用于重切削的場合。
- ◎ To do radial clamp and axial pull down simultaneously, it can keep the workpiece attaching close to the base surface of the chuck. During clamping process, there is almost no workpiece uplifting movement.
- ◎ It can go with Air-tight pressure and detect to inspect the axial position, it's suitable for high precision length machining work.
- ◎ This chuck is Pin arbor pull-down mechanism, the chuck body is heat-treated and fine bored, the clamping precision and durability is very good, it's suitable for heavy duty machining process.



3AT-08A5
3AT-10A6
參考圖A
Refer to Fig.A



規格 Spec 型號 Model	楔心行程 Plunger stroke (mm)	爪行程直徑 Jaw stroke (Dia) (mm)	最大夾持直徑 Max.clamping dia (mm)	最小夾持直徑 Min.clamping dia (mm)	容許油壓缸推力 Max. D.B. pull KN (Kgf)	最大夾持力 Max. clamping force KN (Kgf)	最高轉速 Max RPM	慣性矩 I Kg · m ²	重量 Weight (Kg)	適合油缸 Matching Cylinder	最大使用壓力 Max.pressure Mpa (Kgf/cm ²)
3AT-06A5	15	7.8	100	25	18.0(1835)	58.0(5910)	6000	0.05	17	SLN-100/SLAN-100	2.0(20)
3AT-08A5	20	10.3	130	25	25.0(2550)	80.0(8150)	5000	0.14	29	SLN-125/SLAN-125	2.5(25)
3AT-08A6	20	10.3	130	25	25.0(2550)	80.0(8150)	5000	0.14	27.5	SLN-125/SLAN-125	2.2(22)
3AT-10A6	20	10.3	160	35	35.0(3570)	100.0(10100)	4000	0.36	53.5	SLN-125/SLAN-125	3.1(31)
3AT-10A8	20	10.3	160	35	35.0(3570)	100.0(10100)	4000	0.36	51.5	SLN-125/SLAN-125	3.1(31)

規格 Spec 型號 Model	A	B	B1	C(H6)	D	D1	D2	E	E1	F	G max	G min	H
3AT-06A5	168	88	128	140	104.8	82.56	116	5	15	35	30	15	35
3AT-08A5	210	100	145	170	133.4	82.56	104.8	5	23	45	27	7	38
3AT-08A6	210	100	145	170	133.4	106.38	150	5	17	45	27	7	38
3AT-10A6	254	110	160	220	171.4	106.38	133.4	5	25	55	31	11	41
3AT-10A8	254	110	160	220	171.4	139.72	190	5	18	55	31	11	41

規格 Spec 型號 Model	J1	J2	L1	L2 min	M1	M2	M3(Ad.)	M4	M5	N	P min	S	X
3AT-06A5	32	13	13	8	M16	3-M10	3-M6	3-M5	3-M10	50	12.5	30	50
3AT-08A5	37	16	17	9	M20	3-M12	6-M10	3-M6	3-M12	63	12.5	35	60
3AT-08A6	37	16	17	9	M20	3-M12	3-M6	3-M6	3-M12	63	12.5	35	60
3AT-10A6	48	20	19	9	M24	3-M16	6-M12	3-M6	3-M14	74	17.5	40	70
3AT-10A8	48	20	19	9	M24	3-M16	3-M8	3-M6	3-M14	74	17.5	40	70

* 保留技術更改的權利，恕不另行通知 Subject to technology changes without prior information
* 非標需求可訂做 Non-standard requirements can be made