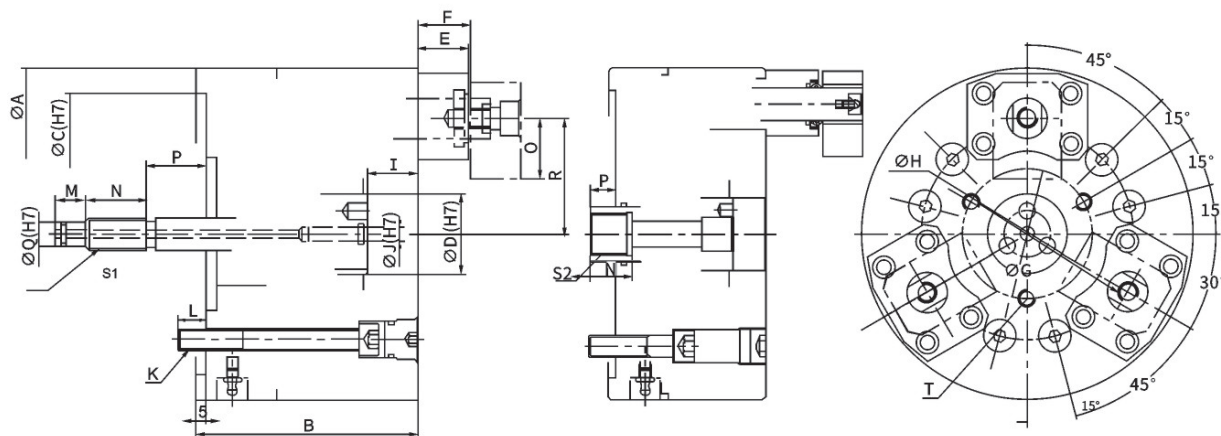
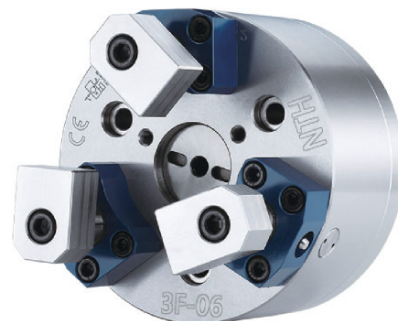


### > 3F SERIES

#### 三爪中實型指形動力夾頭

#### 3 JAW FINGER POWER CHUCK

- ◎ 夾持工件端面，防止工件夾持變形，適合薄壁工件加工。
- ◎ 夾持補償機構，可夾持不規則断面之工件。
- ◎ 夾頭中心可裝設工件密著確認裝置。
- ◎ Prevent deformation of workpiece for gripping the terminal surface, suitable for thin workpiece process.
- ◎ The compensating mechanism of gripping that can grasp the workpieces of the irregular surface.
- ◎ Additional check device able to install in the center of chuck.



規格 Spec 型號 Model	A (mm)	B (mm)	C (mm)	D (mm)	E (mm)	F (mm)	ØG (mm)	ØH (mm)	I (mm)	J (mm)
3F-05	135	110	110	37	25	28~48	50	82.6	5~25	8
3F-06	165	110	140	40	25	28~48	64	104.8	5~25	8
3F-08	210	120	170	56	40	43~68	104	133.4	5~25	16
3F-10	254	120	220	56	40	43~68	140	171.4	5~25	16
3F-12	304	120	220	56	40	43~68	190	171.4	6~26	-

規格 Spec 型號 Model	K (mm)	L (mm)	M (mm)	N (mm)	O (mm)	P1 (mm)	P2 (mm)	Q (mm)	R (mm)	S1 (mm)
3F-05	3-M10	14	15	30	30	50~70	-	9	42.5	M12X1.75P
3F-06	6-M10	14	15	30	30	50~70	-	12	57.5	M16X2.0P
3F-08	6-M12	18	15	30	40	50~70	0~20	16	77.5	M20X2.5P
3F-10	6-M16	18	15	30	40	50~70	0~20	16	99.5	M20X2.5P
3F-12	6-M16	18	15	30	40	-	0~20	-	124.5	-

規格 Spec 型號 Model	S2 (mm)	T (mm)	爪上下行程 Jaw stroke (mm)	最大拉力 Max.Pull Force kgf(KN)	最高使用壓力 Max.Pressure kgf/cm <sup>2</sup> (Mpa)	最高回轉速 Max.Speed (min <sup>-1</sup> )	搭配油缸型號 Matching Cylinder	重量 Weight (Kg)
3F-05	-	3-M6	20	5	0.9	4000	S-100	12
3F-06	-	3-M8	20	9	1.4	3600	S-100	13
3F-08	M32x1.5	3-M8	20	18	2.5	2900	S-125	24
3F-10	M32x1.5	3-M8	20	18	2.5	2400	S-125	37
3F-12	M32x1.5	6-M8	20	18	2.5	2100	S-150	49

\* 保留技術更改的權利，恕不另行通知 Subject to technology changes without prior information  
 \* 非標需求可訂做 Non-standard requirements can be made

