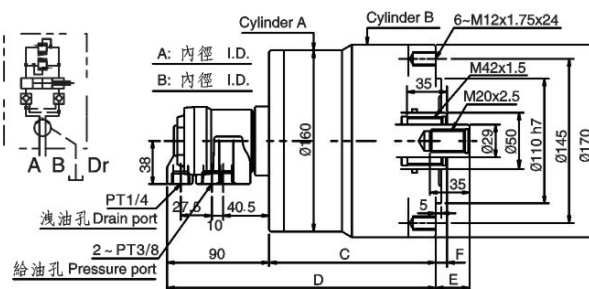
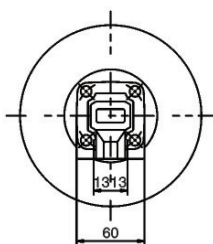


### > SRD SERIES

#### 附逆止閥雙杆型回轉油壓缸

DOUBLE ROD ROTATING CYLINDER WITH SAFELY DEVICE



- ◎ 短型，輕量，雙杆型回轉油壓缸。
- ◎ 內建逆止閥自鎖機構及壓力洩壓閥。
- ◎ For short form, light weight, double rod rotary cylinder.
- ◎ Built-in safety check valves and pressure relief valves.
- ◎ 洩油孔配管務必單獨接回油壓槽，以避免產生背壓。
- ◎ The drain port should be independently connected to oil tank to avoid back pressure.

規格 Spec. 型號 Model	活塞面積 Eff.piston area cm <sup>2</sup>				行程 (mm) Piston stroke	最高回轉速 max r.p.m	最大使用壓力 Max. Operating Pressure MPa(kgf / cm <sup>2</sup> )	慣性矩 kg·m <sup>2</sup>	重量 Weight ( kg )
	押側 Extend		拉側 Retract						
	A	B	A	B					
SRD-120	122.7	126.1	116.1	113.1	20	5000	3.0(30)	0.14	11.3
SRD-125					25			0.15	11.5

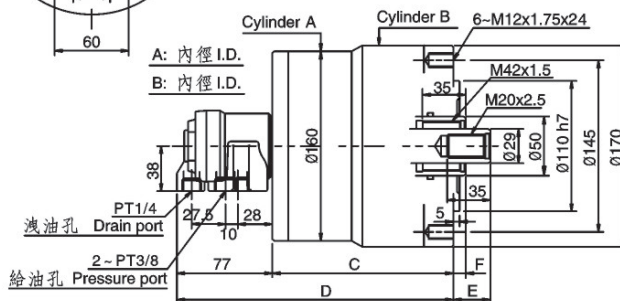
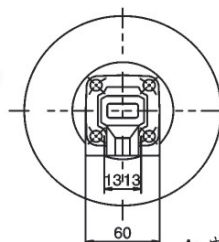
寸法 Size 型號 Model	A	B	C	D	E		F	
					max.	min.	max.	min.
SRD-120	130	125	137	227	60	40	35	15
SRD-125			147	237	55	30		10

### > SRD-N SERIES

#### 雙杆式回轉油壓缸

DOUBLE ROD ROTATING CYLINDER

- ◎ 短型，輕量，雙杆型回轉油壓缸。
- ◎ For short form, light weight, double rod rotary cylinder.
- ◎ 洩油孔配管務必單獨接回油壓槽，以避免產生背壓。
- ◎ The drain port should be independently connected to oil tank to avoid back pressure.



規格 Spec. 型號 Model	活塞面積 Eff.piston area cm <sup>2</sup>				行程 (mm) Piston stroke	最高回轉速 Max R.P.M	最大使用壓力 Max. Operating Pressure MPa(kgf / cm <sup>2</sup> )	慣性矩 kg·m <sup>2</sup>	重量 Weight ( kg )
	押側 Extend		拉側 Retract						
	A	B	A	B					
SRD-120N	122.7	126.1	116.1	113.1	20	5000	3.0(30)	0.14	11.2
SRD-125N					25			0.15	11.4

寸法 Size 型號 Model	A	B	C	D	E		F	
					max	min	max	min.
SRD-120N	130	125	137	215	60	40	35	15
SRD-125N			147	224	55	30		10

\* 保留技術更改的權利，恕不另行通知 Subject to technology changes without prior information  
 \* 非標需求可訂做 Non-standard requirements can be made

