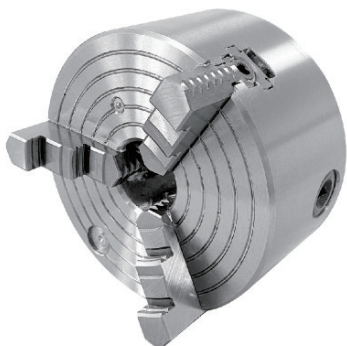


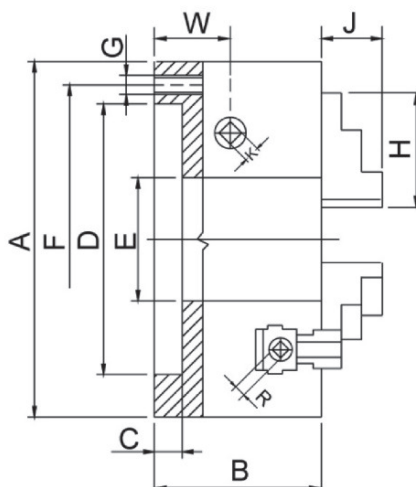
SI系列三爪單連復合卡盤

SI 3 JAW COMBINATION MANUAL CHUCK



- ◎ 適用於車床、轉臺、加工中心等設備，不用更換卡盤，即可實現加工規則工件以及不規則工件。
- ◎ 既有自定心卡盤的夾持功能，又有單動卡盤的夾持功能。
- ◎ 後孔安裝設計，可改裝為前後鎖共用。

- ◎ It can be used onto lathe machine, rotary table or CNC machine and so on, it can work for regular or irregular workpiece without changing the chuck.
- ◎ It has the gripping function of both scroll chuck and independent movement chuck.
- ◎ Back mounting hole design, and front mounting is achievable.



單位/UNIT:mm

規格 Spec 型號 Model	A	B	C	D	E	F	G	H	J	K	R	W	最高轉速 RPM max
SI-160	160	82	4	125	42	140	3×M10	69	28.5	11	6	22.3	3200
SI-200	200	96	4	160	55	176	3×M10	85	31	11	8	26	3000
SI-250	250	101	5	200	76	224	3×M12	91	33	14	8	29.3	2500
SI-315	315	118	5	260	103	286	3×M16	125	42	14	10	32	2000
SI-400	400	124	6	330	136	362	3×M16	145	58	17	10	36	1500
SI-500	500	145	6	420	190	458	6×M16	180	61	19	12	43.5	1000
SI-630	630	160	7	545	252	586	6×M16	225	72	19	12	48.5	750
SI-800	800	200	10	710	267	760	6×M20	245	67	19	17	57.5	600
SI-1000	1000	236	10	910	460	950	6×M24	245	88	24	19	67	380
SI-1250	1250	241	10	1000	560	1100	6×M30	245	88	24	19	72	200

* 保留技術更改的權利，恕不另行通知 Subject to technology changes without prior information
 * 非標需求可訂做 Non-standard requirements can be made