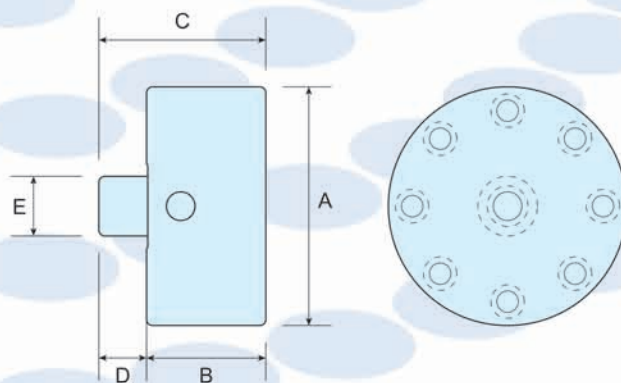


ISO-9001:2015



- ▶ 外置安裝式零點定位裝置可以安裝在機床工作台、零點定位托架、夾具基準板等處。
- ▶ 常在銑削、磨削、腐蝕加工或者射出成形機上被用來快速裝夾工件或者夾具，零點定位裝置可以被安裝在任何位置，甚至是立式或頂式安裝。
- ▶ The External installation of Zero-point system can set up on machine table, zero-point bracket, and fixture board.
- ▶ It usually uses for fixtures on milling, grinding, corrosion processing or injection molding machine. It can also set up on every single place, even on vertical or top-mounted device.



MODEL	A	B	C	D	E	夾緊力POWER	拉緊力POWER	N.W.
ZPS-25RH	100	50	70	20	25	20 KN	55 KN	4.5kg
ZPS-25RL	100	50	70	20	25	17 KN	55 KN	4.5kg

▶ RH液壓式Hydraulic ▶ RL氣壓式Pneumatic