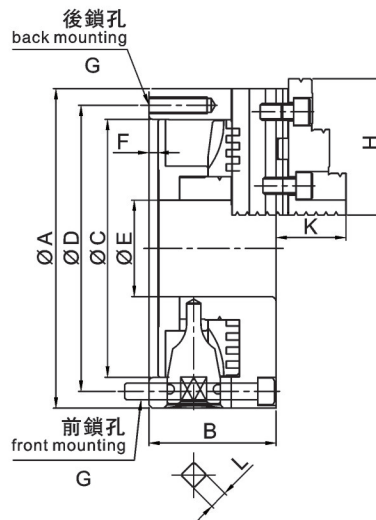
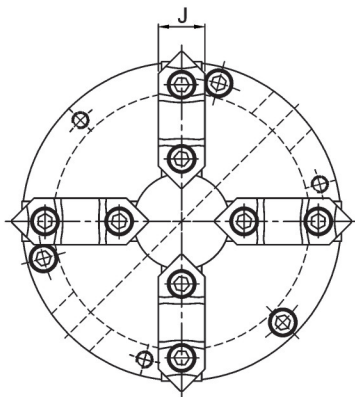
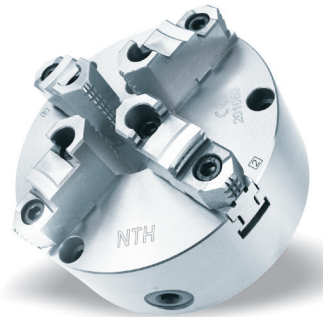


## 四爪強力式自定心卡盤(前後鎖通用)

### SKF 4 JAW UNIVERSAL SCROLL CHUCK(FRONT AND BACK MOUNTING)

- 1.直口連接
- 2.標配分離式硬爪一組
- 3.高精度重複夾持

- 1.Plain back
- 2.Standard accessories: 1 set two-piece hard jaws
3. High accuracy on repeating clamping



#### 規格 / Specification

單位 / UNIT:mm

型式/規格 Model/Spec	最大容許扭矩 Max. Allowable Torque N*m	最大靜夾持力 Max. Gripping Force KN	淨重 Weight Kg	最高轉速 RPM	夾持範圍外徑 O.D Clamping Range mm	夾持範圍內徑 I.D. Clamping Range mm
SKF-04*	44	12	3.1	2500	3-90	32-84
SKF-05*	63	15	4.4	2500	3-110	35-100
SKF-06	88	31	11.4	2000	8-160	55-150
SKF-07	107	31	12.2	2000	8-180	62-170
SKF-08	128	33	16.2	2000	8-180	62-170
SKF-09	147	37	21.2	2000	11-220	70-210
SKF-10	176	46	28	1800	12-260	80-250
SKF-12	206	55	41	1800	15-300	90-290
SKF-14	225	55	54	1500	15-350	100-330
SKF-16	245	60	74	1500	30-400	110-380

型式/規格 Model/Spec	A	B	C	D	E	F	G	H	J	K	L
SKF-04*	112	58	80	95	24	4.5	3(4)-M8x1.25P	46.5	19	32	9
SKF-05*	132	60	100	115	32	4.5	3(4)-M8x1.25P	56	22	40	9
SKF-06	167	66	130	147	45	5	3-M10x1.5P	67	25	43	11
SKF-07	193	76	155	172	58	5	3-M10x1.5P	80	30	47	11
SKF-08	203	76	160	176	58	5	3-M10x1.5P	80	30	47	11
SKF-09	233	84	190	210	70	6	3-M12x1.75P	80	30	46	14
SKF-10	273	86	230	250	89	5.5	3-M12x1.75P	95	36	54	14
SKF-12	310	96	260	285	105	7	3-M12x1.75P	110	42	63	14
SKF-14	355	122	300	328	127	7	6-M12x1.75P	110	42	63	14
SKF-16	405	122	345	375	160	8.5	6-M14x2P	130	45	72	17

\*注：前端連接螺絲為4個； Note: The front mounting bolts are 4pcs

\* 保留技術更改的權利，恕不另行通知 Subject to technology changes without prior information

\* 非標需求可訂做 Non-standard requirements can be made